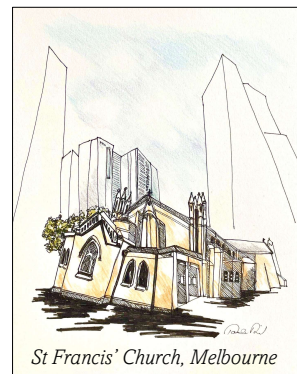


A PILGRIM'S PALETTE

– art exhibition by Pamela Reid



media release – 12 January 2024

“Being accepted for an Artists’ Residency is a privilege,” says Melbourne artist, Pamela Reid. “For me, it was a long-time dream, a lifetime realised in Assisi, Italy, 2023.”

Growing up north of the city, Pamela’s Mother would take her into town on the tram. *“Mum had sewn my dresses, I wore white gloves and a sailor’s hat. Melbourne was rich in beautiful old buildings, particularly ‘the Paris end’ of Collins Street. On special religious occasions, we would go to Mass at St Francis’ Church,”* says Pamela.

Her childhood passion for art and photography took back seat as Pamela pursued a career in the advertising industry (Australia and UK), then for over 25 years in the Entertainment/Music industry in areas of artist management, concert touring, event project management, marketing and publicity. Her love of both performance and visual arts, along with an ability to visualise and comprehend design and composition, played an essential role in her day job, while working with photographers, graphic designers, illustrators, film and theatre-makers informed the artist emerging in her personal life.

Several solo exhibitions followed, but it wasn’t until 2023 that Pamela achieved her dream when she was accepted for a Residency at Arte Studio Ginestrelle, Assisi, Italy. Having previously visited Assisi on an Art History and Painting tour, she had determined to return. Home of the Basilica of St Francis, with eight wall gates and 30 churches, Assisi is steeped in Catholicism and abundant with art history. A UNESCO World Heritage town, it is one of the worlds’ most important pilgrimage destinations.

Pamela had titled her Residency project *“Assisi: where the past Lives in the Present”*. To explore the possibilities for creating the artwork, she immersed in Assisi’s presence, impacted by its numinous magnetism. Affected by the many surviving frescoes, worn with edges torn by history, Pamela was inspired to create a series of marble-like “tiles”. Working with watercolours, she painted six symbolic and representative illustrations, some with collage, tearing the edges and adhering each to a tile: the stigmata of San Francesco; the face of Christ on the San Damiano Cross, suspended in Basilica di Santa Chiara; The Canticle of the Creatures by San Francesco; architectural aspect of the Basilica di San Francesco d’Assisi facade; San Francesco with a dove, Santa Chiara. The completed work remained in Assisi where it was exhibited at the International Contemporary Art Exhibition 2023 later in the year.

“Experiencing the residency was an immensely fulfilling journey, both spiritually and creatively,” said Pamela. There were many ‘magical’ moments. She lists some of these as; morning walks, steeply up to Rocca Maggiore with vast views across valleys, loud birdsong, bells from the Basilicas of St Francis of Assisi and St Clare simultaneously chiming to start a new day in Assisi; coffee afterwards at a little café opposite The Duomo of San Rufino, Patron Saint and first Bishop of Assisi; a procession of monks, priests and nuns that travelled through her narrow street at 10pm one night. Pamela joined the procession on its road to the Basilica of St Francis; the beautiful Basilica of Santa Chiara (St Claire). From a wealthy family, Santa Chiara was the first of St Francis’ disciples, she vowed to a life of poverty and founded the Order of the Poor Clares (Clarissines); attending The Great Basilicas Festival by USA’s Capella of Calvin University and Members of the Grand Rapids Symphony Chorus inside the Basilica of St Francis.

"Another special occasion was a day trip to nearby ancient Foligno, where Art Historian, Prof. Ivo Picchiarelli, walked us around the Piazza della Repubblica, explaining the many frescoes and artifacts in Palazzo Trinci museum," explains Pamela. "Foligno was the seat of a flourishing school of painting in the 15th century. Medieval Foligno prospered under the government of the Trinci family as semi-independent deputies of the Holy See from 1305. However, their power fell in 1439 and Foligno became part of the Papal States."

Her last weekend in Assisi coincided with the Corpus Domini flower festival. Locals made floral displays along the narrow back streets of town. Afterwards, sitting again in her favourite café, Pamela watched the procession from San Rufino Cathedral as it stepped through the streets, trampling the flowers.

A multi-disciplinary artist, Pamela's **A Pilgrim's Palette** exhibits art from recent "urban abstract" sketches around Melbourne, where surviving architecture of old buildings is often squashed into rising cityscape. Other works were created on her recent journeys to Europe including en plein air oil paintings. Works are in various mediums of pen ink with colour pencil, watercolours and oil paints, to capture the essence, colours and textures in this lifecycle passage to Assisi.

"I will be forever grateful for the generosity of Marina Marli, Director of Arte Studio Ginestrelle," says Pamela "and the extraordinary opportunity to bring this chapter of my life home, into the beautiful gallery at St Francis' Church, Melbourne."

Exhibition: **A PILGRIM'S PALETTE**
Gallery: Art at St Francis' Contemporary Art Space, 326 Lonsdale St., Melbourne
Dates: 5th February – 10th March, 2024
Gallery hours: Monday-Friday 10am to 4pm, Sunday 10am – 3pm
Gallery contact: Tel. (03) 9663 2495 Email bwremmen@bigpond.net.au

Media Contact: Pamela Reid mob: 0409 908 008 e: pamelareid@bigpond.com

Pamela Reid - 2023 Artist Residency at Studio Ginestralle, Assisi, Italy



Artists

AUNIS AHONEN FINLAND	RACHEL POLLACK USA
SYLVIA ATWOOD USA	ZAC PORTER USA
FRANK J. AVELLA USA	LEANNE PRUSSING AUSTRALIA
LAUREN BARRETT USA	KAS RASENBERG UK
BRAD BISCHOFF USA	FRANÇOISE RAYMOND FRANCE
JULIANNA BUCKLEY USA	PAMELA REID AUSTRALIA
JENNIFER CAMPBELL USA	PAUL REUTHER USA
JAMES CAPOZZI USA	SERENA ROSSI ITALY
CHARLES CUSHING USA	MASHA RYSKIN USA
ELISE DEAN WOLF USA	ROLAND SCHWARZ AUSTRALIA
DANIELA DENTE ITALY	LAUREL SMITH CANADA
JESSICA DUNNE USA	GWEN WALSTRAND USA
SOPHIE DURBIN USA	CHRISTOPHER WILLARD CANADA
RON FALZONE USA	KEITH WILSON RUA IRELAND
SHANNON FASELER USA	NANCY WISTI GRAYSON USA
BETSY FEAR USA	ANN WIZER USA
MARILYN FLANEGAN USA	JUTTA YLÄ-MONONEN FINLAND
LAURIE FRANKLIN IRELAND/AUSTRALIA	DASHA ZIBOROVA USA
JANICE GORDON USA/SPAIN	
KAREN HEROLD USA	
YOKO ICHIKAWA JAPAN	
MARIA KATERINA IERIDOU CYPRUS	
SYLVIE JAMBRESIC FRANCE	
CAROLYN KILDAY USA	
STEPHEN KITSAKOS USA	
MIRANDA MAHER USA	
LYDIA MAKEPEACE USA	
SUSAN MANNION IRELAND	
SERGE MARCHETTA CANADA	
MATTHEW MCCONVILLE USA	
JO MORELLO USA	
SUSAN O'MALLEY USA	
DOUGLAS PIPER USA	
MEREDITH PIPER USA	

with the participation of
FAT CANARY JOURNAL & GALLERY
USA

and the finalists of
"ARTOUR-Q and RESPECT
is a MUST"
ROQUE ARDISSONE
IORELLA BITTAR
The Most 2022
LUIGI CAIFFA
GIULIANA GERONAZZO
GIULIANA GIRIBALDI
MONICA GONZALEZ
GIUSEPPE GUSINU
FUKUSHI ITO
MARIASOLE LIZZARI
GIANNI MANTOVANI
ETTORE PIRAS
FRANCO REPETTO

Patrocinio della
CITTÀ DI ASSISI
COMUNE DI ASSISI

FAT CANARY JOURNAL & GALLERY

Parkko

Corcoran School of the Arts & Design
Columbia College of Arts & Sciences

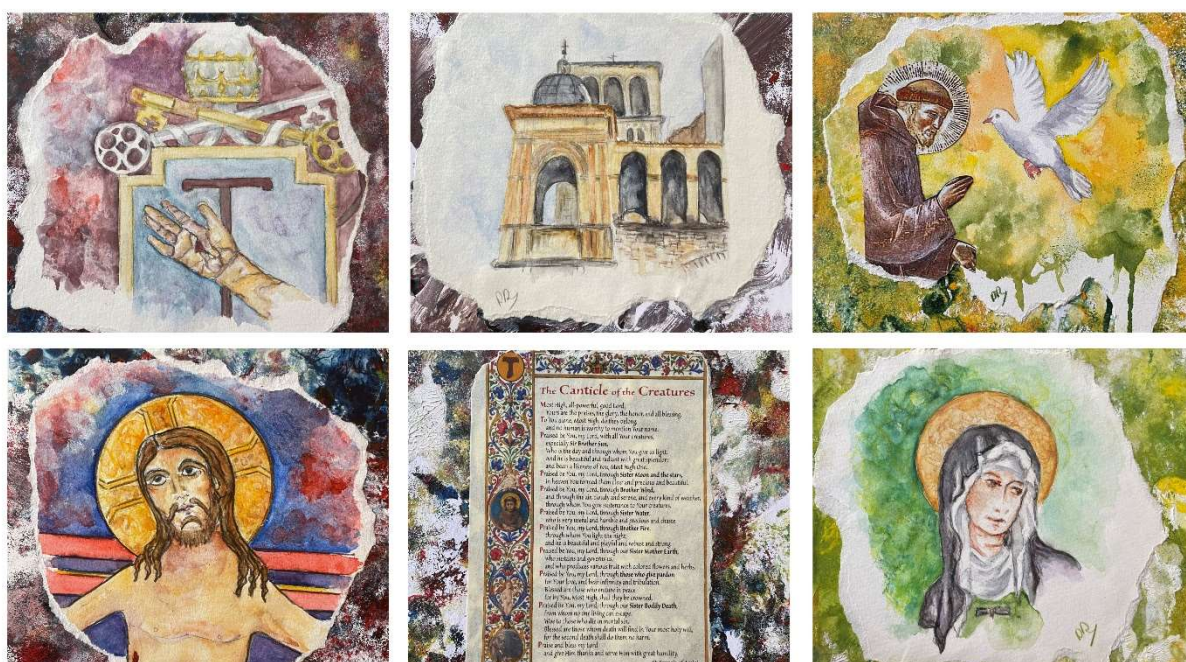
GW University Writing Program
Columbian College of Arts and Sciences

MC MONTGOMERY COLLEGE

TEXAS STATE UNIVERSITY

USA
1882

"Assisi: Where the Past Lives in the Present" Artwork (below) remained in Assisi for exhibiting.



The stigmata of San Francesco, Santa Chiara; architectural aspect of the Basilica di San Francesco d'Assisi façade, San Francesco with a dove, the face of Christ on the San Damiano Cross, suspended in Basilica di Santa Chiara, the Canticle of the Creatures by San Francesco, Santa Chiara.